

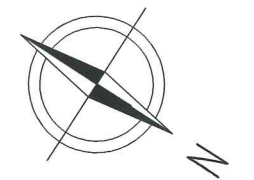
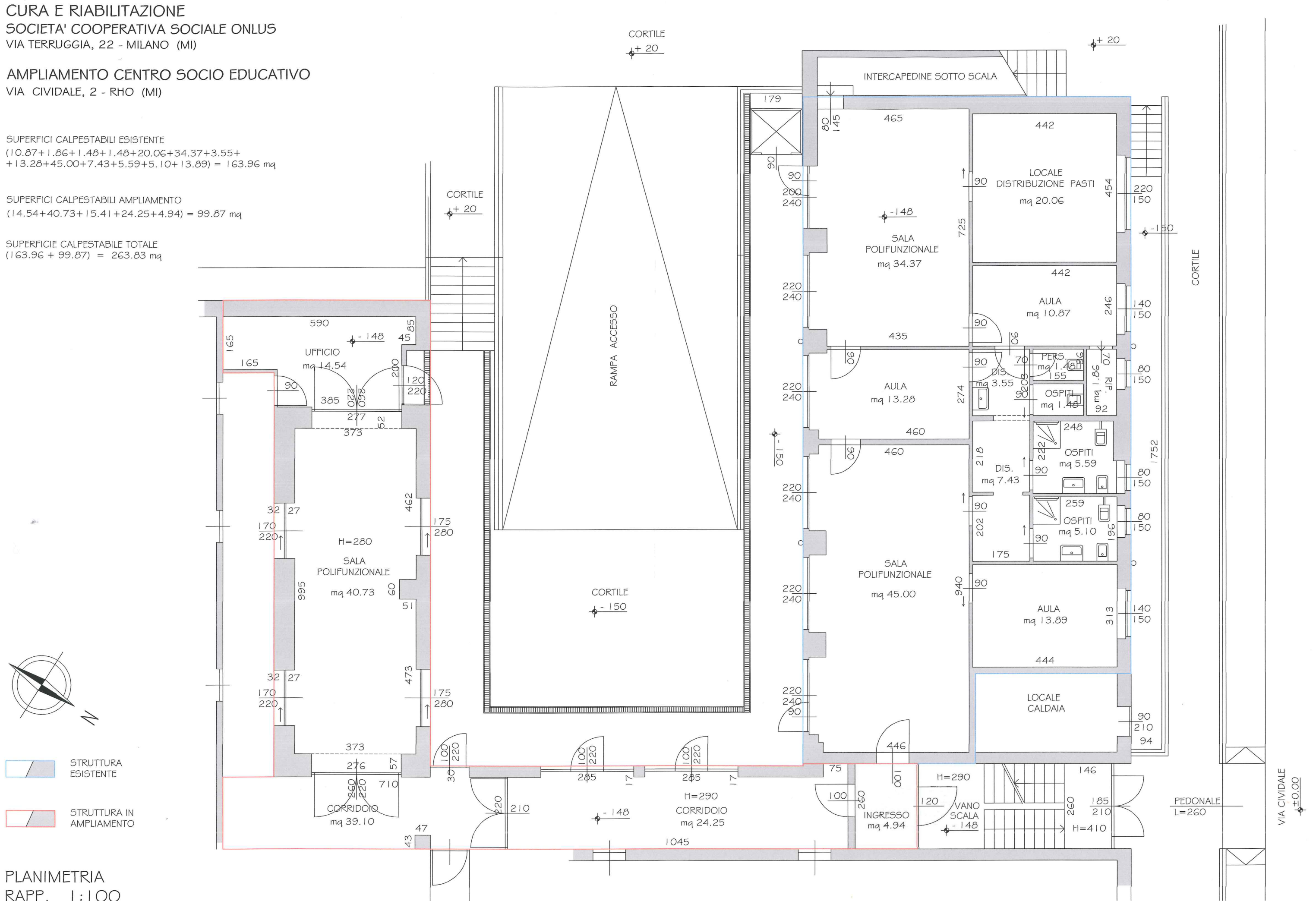
CURA E RIABILITAZIONE
 SOCIETA' COOPERATIVA SOCIALE ONLUS
 VIA TERRUGGIA, 22 - MILANO (MI)

AMPLIAMENTO CENTRO SOCIO EDUCATIVO
 VIA CIVIDALE, 2 - RHO (MI)

SUPERFICI CALPESTABILI ESISTENTE
 (10.87+1.86+1.48+1.48+20.06+34.37+3.55+
 +13.28+45.00+7.43+5.59+5.10+13.89) = 163.96 mq

SUPERFICI CALPESTABILI AMPLIAMENTO
 (14.54+40.73+15.41+24.25+4.94) = 99.87 mq

SUPERFICIE CALPESTABILE TOTALE
 (163.96 + 99.87) = 263.83 mq



- STRUTTURA ESISTENTE
- STRUTTURA IN AMPLIAMENTO

PLANIMETRIA
 RAPP. 1:100

VIA CIVIDALE
 ±0.00

PEDONALE
 L=260